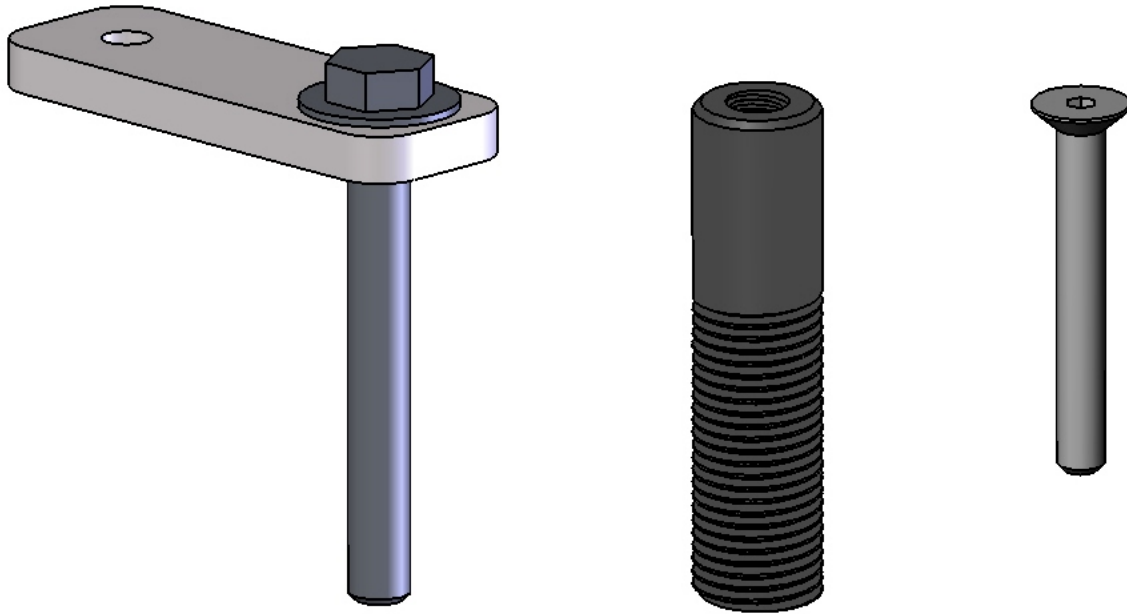




Aqua Creek Products

The Total Solution for Pool and Spa Access



FIXING KIT INSTRUCTIONS (FOR PATRIOT & REBEL PORTABLE LIFTS)

PART NUMBER: F-2PDS

MANDATORY – LEAVE THIS MANUAL WITH LIFT OWNER

- WARNING -

IMPORTANT SAFETY INSTRUCTIONS

1. READ AND FOLLOW ALL INSTRUCTIONS. LIFT SAFETY CAN ONLY BE ENSURED IF THE LIFT IS INSTALLED AND OPERATED PROPERLY – ACCORDING TO THESE INSTRUCTIONS.
2. TO REDUCE THE RISK OF INJURY, DO NOT PERMIT CHILDREN TO USE THIS PRODUCT UNLESS THEY ARE CLOSELY SUPERVISED AT ALL TIMES.
3. DO NOT PERMIT CHILDREN TO PLAY ON OR AROUND THIS PRODUCT.
4. NEVER APPLY DIRECT WATER PRESSURE TO THE ELECTRONIC COMPONENTS.
5. SAVE A COPY OF THESE INSTRUCTIONS IN A SAFE AND EASILY ACCESSIBLE PLACE.

AQUA CREEK PRODUCTS

9889 GARRYMORE LANE

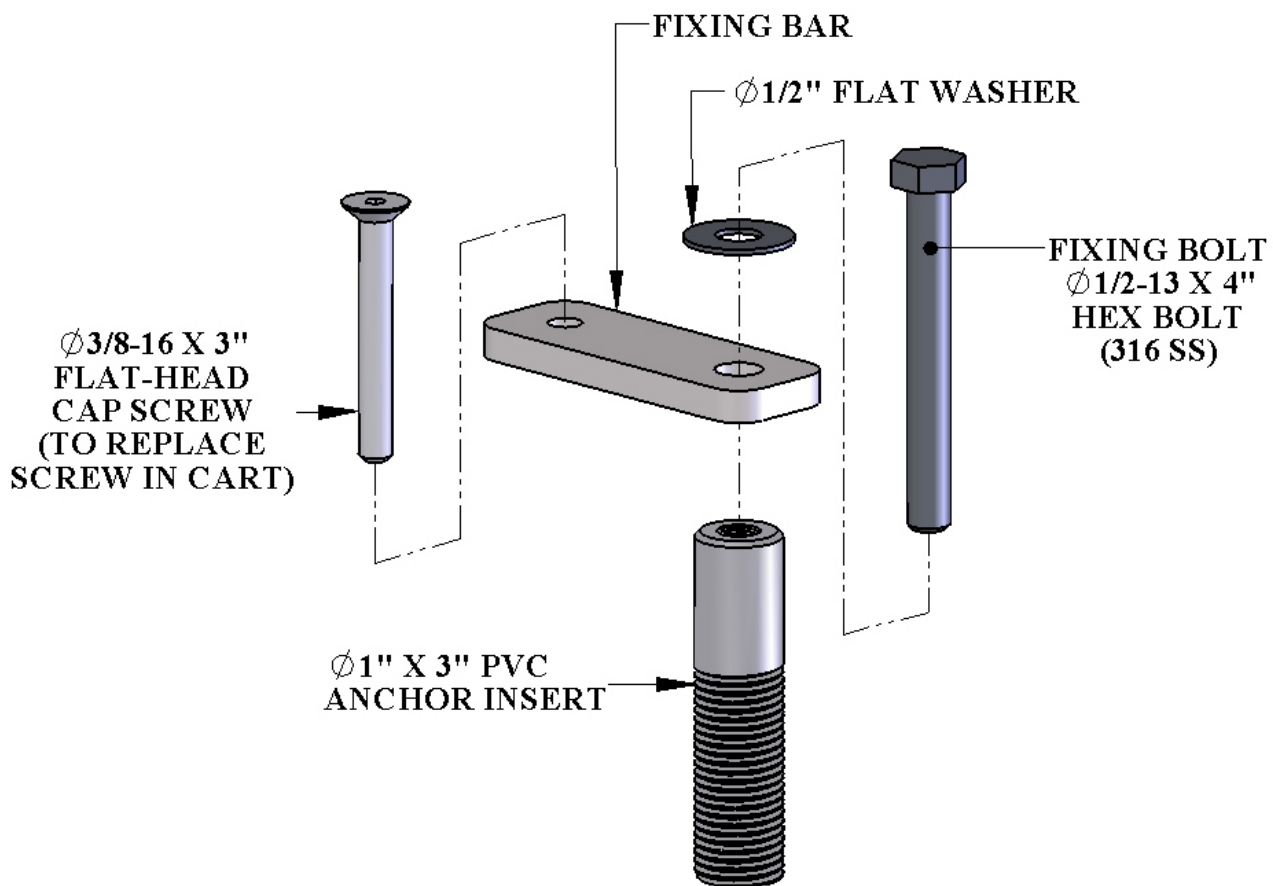
MISSOULA, MT 59808

1-888-687-3552

FAX: 406-549-2602

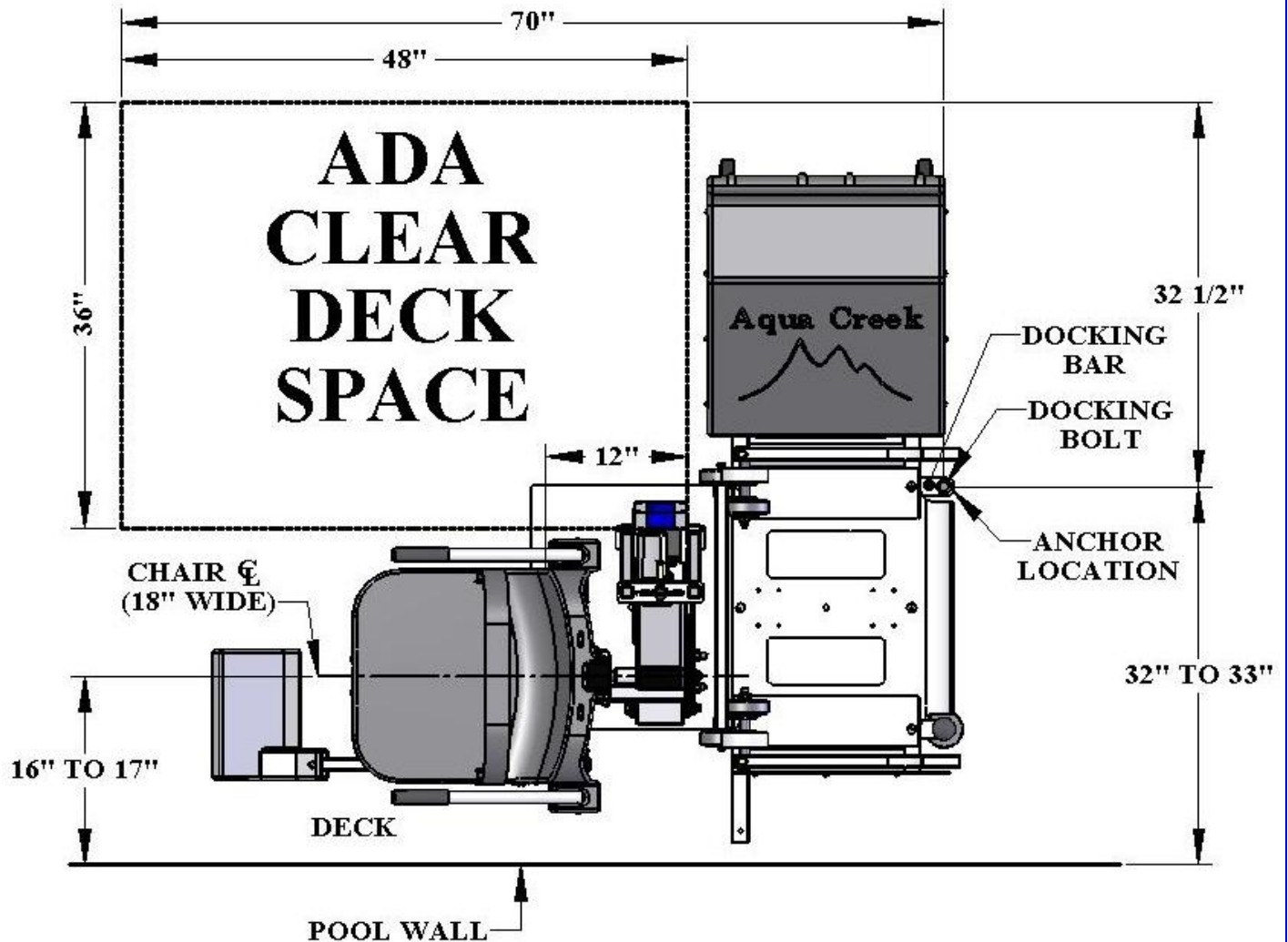
THE FIXING KIT

The Aqua Creek FIXING KIT has been designed to be easy to install and operate. It consists of a "FIXING BAR", a "FIXING BOLT" to hold down the lift and a 1" X 4" PVC ANCHOR INSERT. The installation requires drilling one (1) 1-1/4" diameter hole 4" deep. The installation instructions can be found on page 4. If you have any questions regarding this product or its' installation please contact Aqua Creek for more information.



ADA COMPLIANT INSTALLATION

To make a “portable” lift ADA compliant it must be fixed in position, and can’t be moved or removed without tools. This is to ensure that the lift is available at all times, and that it is installed in a location that meets the ADA requirements. The Aqua Creek FIXING KIT has been designed to meet all ADA requirements when properly installed. The diagram below gives an overview of what an “ADA compliant” installation entails.



INSTALLATION INSTRUCTIONS:

TOOLS REQUIRED:

CORE-DRILLING RIG

1-1/4" DIAMETER CORE-DRILL

TAPE MEASURE

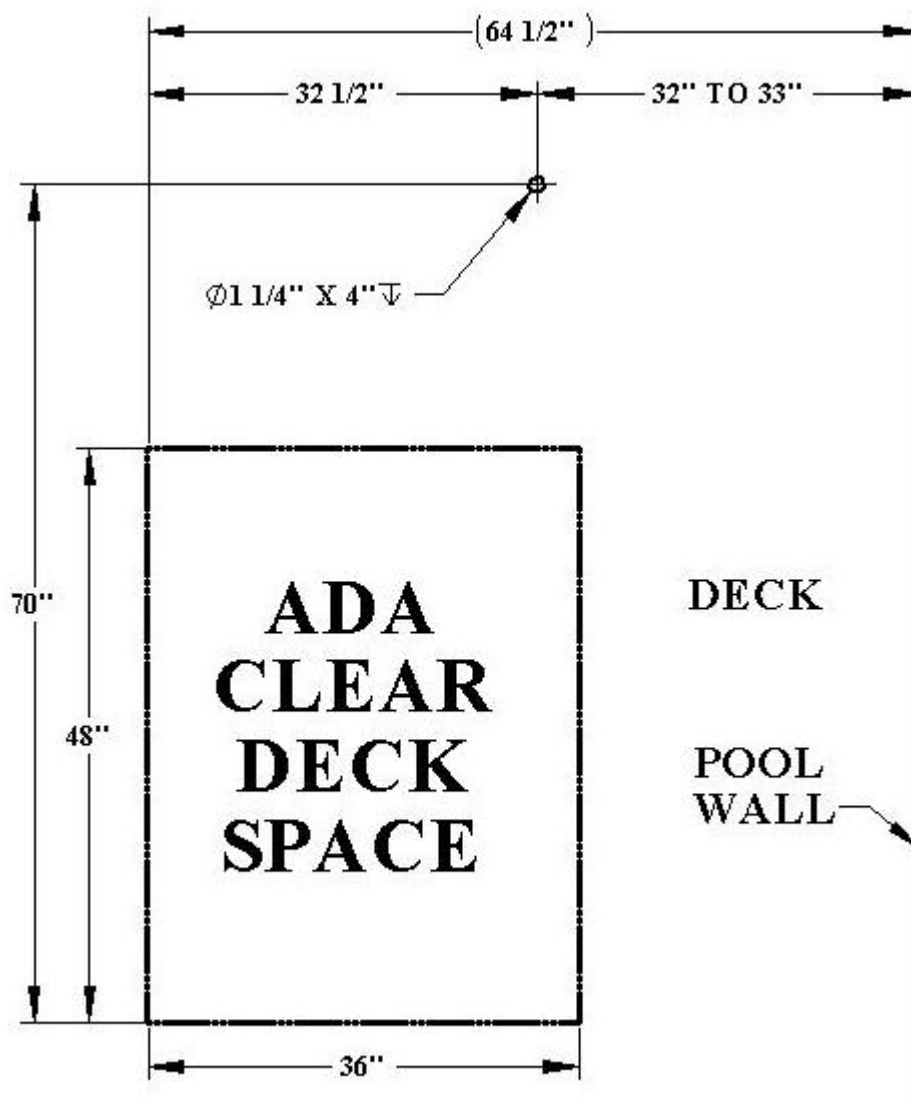
MARKING PEN

STEP 1] Use the diagram below to determine the location of the PVC ANCHOR INSERT. Make sure to allow for the clear deck space as shown.

STEP 2] Mark the location for the 1-1/4" x 4" deep anchor hole. Drill a 1/2" diameter, 4" deep hole at the marked location.

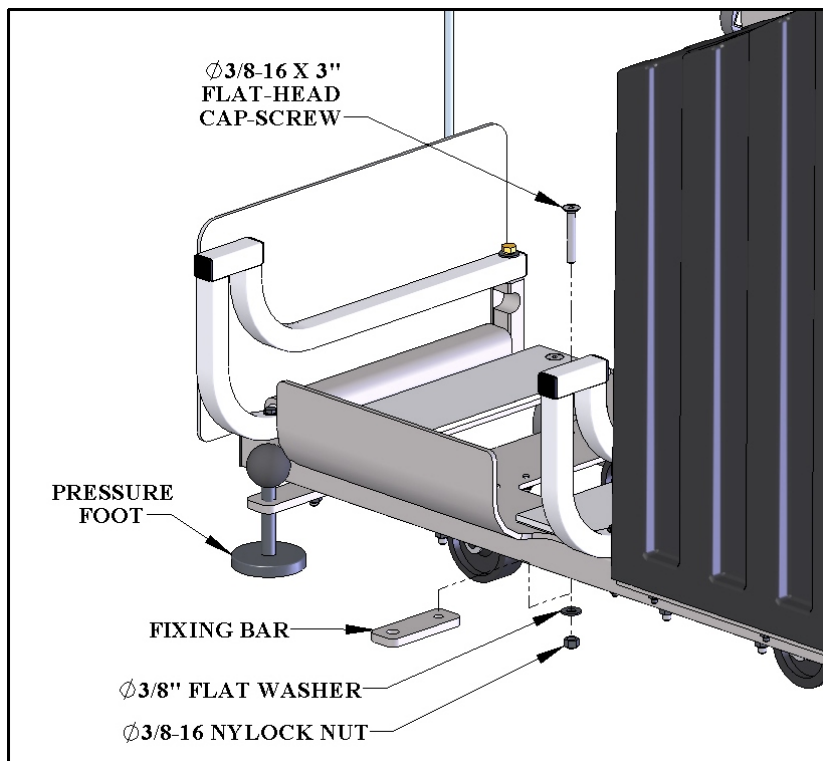
STEP 3] Dry-fit the anchor-insert to make sure it fits flush with the deck surface.

STEP 4] Fill the hole 1/2 full with epoxy. Install the anchor insert flush with the deck surface. Allow 24 hours for the epoxy to cure.



PLAN VIEW (TOP)

INSTALLATION INSTRUCTIONS:



STEP 1: Remove the 3/8" flat-head cap-screw from the location on the portable cart where the FIXING BAR will be installed. Remove the bolt using a 7/32" hex key or wrench and a 9/16" hex wrench as shown in STEP 1. Save the flat washer and Nylock nut for the next step.

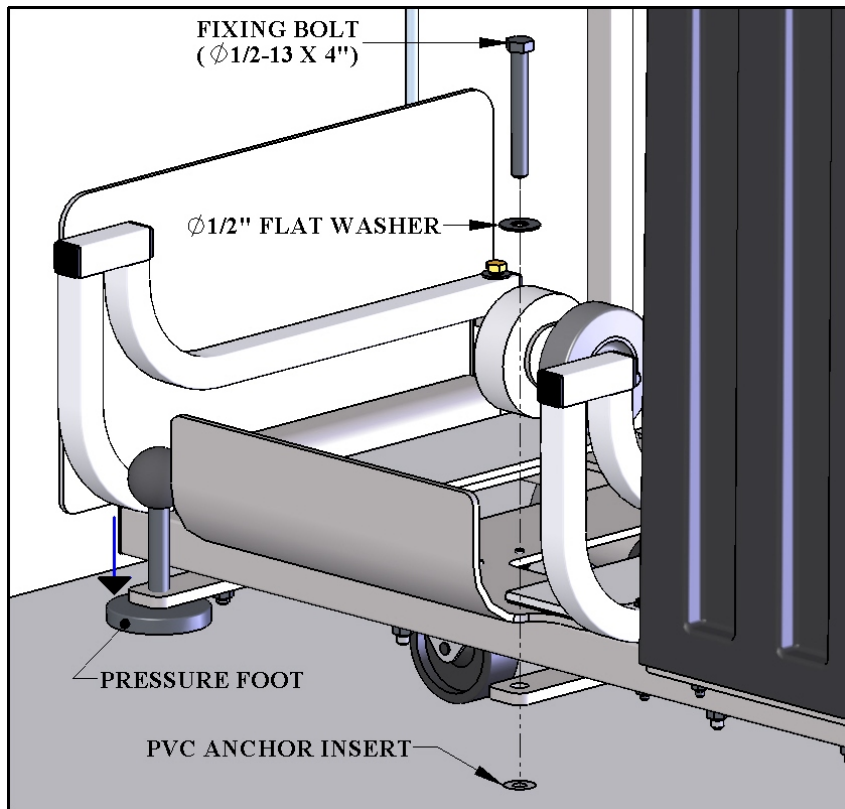
STEP 2: Align the smaller hole of the FIXING BAR from underneath and install the replacement 3/8" x 3" flat-head cap-screw as shown in STEP 2. Install the 3/8" flat washer and Nylock nut (underneath) from STEP 1.

STEP 3: Tighten the 3/8" flat-head bolt and Nylock nut using the 7/32" hex key and 9/16" hex wrench from STEP 1. Tighten the hardware until snug.

The FIXING BAR is now ready to use.



OPERATING INSTRUCTIONS



STEP 1: Roll the portable cart over the installed anchor as shown above and in the picture (STEP 1). Look straight down through the FIXING BAR to align with the PVC ANCHOR INSERT.

STEP 2: Drop the 1/2" x 4" FIXING BOLT into the FIXING BAR and start to thread the bolt into the anchor by hand. Adjust the alignment until the bolt threads in a couple of threads by hand. This is to ensure that the bolt is properly aligned before threading with a wrench.

STEP 3: Tighten the FIXING BOLT with a 3/4" wrench or socket. Tighten until the bolt is just touching the flat washer. **DO NOT OVERTIGHTEN.**

Lower the PRESSURE FOOT until it touches the deck. Tightening the PRESSURE FOOT will hold the lift in place more securely. Also lock the locking casters (rear) for even more stability.

The lift is now ready to deploy and use. Follow the operating instructions included with the Aqua Creek Products' lift.

